

Build something great™



BORAL TEVEN QUARRY

> Whole of Community Meeting

8 June 2017
Ballina RSL Club, Ballina

Agenda

- > **Welcome and introductions, safety moment**
- > **Previous Community Consultative Committee (CCC) meeting and matters arising**
 - > 2 November 2016 (minutes available from www.boral.com.au/tevenquarry)
- > **Confirmation of CCC community representatives 2017-19 and Terms of Reference review**
- > **Quarry operations update 2015-17**
- > **Environmental management update 2015-17**
- > **Boral Teven Quarry planning consent (from Nov 2016)**
- > **Community activities 2015-17 and general business**



Introductions and safety moment

- > **Richard Tomkins** Operations Manager (Country North), Boral Quarries (NSW/ACT)
- > **Scott Gillieatt** Quarry Manager, Boral Teven Quarry
- > **Rod Johnson** Environment Manager (NSW/ACT), Boral HSE
- > **Ronnie Lawton** HSE Advisor (Northern NSW), Boral HSE
- > **Rod Wallace** Planning & Development Manager (NSW/ACT), Boral Property
- > **Paul Jackson** Stakeholder Rels Mgr (NSW/ACT and National Land Development), Boral Property
- > **Safety moment**



Previous CCC meeting and matters arising

- > **Previous meeting of the Community Consultative Committee**
 - > 2 November 2016
 - > **Note:** Presentations and meeting notes from previous meetings are available from the quarry's website – www.boral.com.au/tevenquarry
- > **Any matters arising?**
 - > Contact with Council re early road sweeper starts
 - > Others?
- > **Apologies for this meeting**





Build something great™

BORAL TEVEN QUARRY

> Community Consultation
Committee 2017-19



CCC Terms of Reference and membership

- > The original Boral Teven Quarry CCC Terms of Reference were developed with community input and endorsed at the first 'whole of community' meeting in 2011.
- > The ToRs were re-endorsed at the 2013 and 2015 WoC meetings.
- > When originally developed, the ToRs included a commitment from us to conduct an 'administrative review' to ensure they remained relevant and up-to-date.
- > We usually conduct this review prior to each WoC meeting. Our review this year has not identified any changes are required, however your input is requested.



CCC Terms of Reference and membership

- > **At the WoC meeting of 19 May 2011, we committed to:**
 - > Stage a WoC meeting every 18 to 24 months for all interested residents and stakeholders to hear about progress at the operations, and
 - > Use the WoC meetings to elect/re-elect the community representatives to the CCC.
- > **The quarry's updated consent still outlines the membership of the CCC.**
 - > CCC is to include at least two representatives of the local community.
 - > Also must include a representative of the Ballina Environment Society.
 - > The 2015-17 members were **Peter Blackwood, Kevin Nelson, Denis Perkins** and **Sam Henderson**.
 - > President of the BES, **Fiona Folan**, has been the Society's representative since 2011.
- > **Nomination and confirmation of CCC community representatives for 2017-19.**



Build something great™



BORAL TEVEN QUARRY

> Quarry operations update
2015-17

■ Current and future projects

- Highway upgrade – Pimlico to Teven
- Highway upgrade – Woolgoolga to Ballina
- Construction of the new Harwood bridge
- Construction of Ferngrove residential estate

■ Local projects

- Internal supply to Boral Concrete plants
- Internal supply to Boral Asphalt plant
- Local civil construction companies



■ PM10 monitor installed

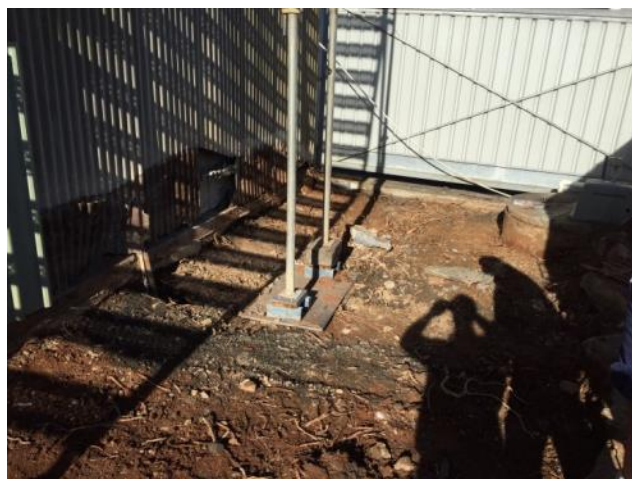
- Situated near Manager's Cottage
- Operates for a continuous 24 hour period every 6 days (as per EPA standard)



■ Wheel wash improvements

- Galvanized metal grid has been installed
- Additional sprays installed underneath grid to spray inside of tyres
- Continuous hire of road sweeper for site - extra cleaning of quarry entrance
- Four extra dust spray have been added to the fixed plant









Build something great™

BORAL TEVEN QUARRY

> Environmental management
update 2015-17



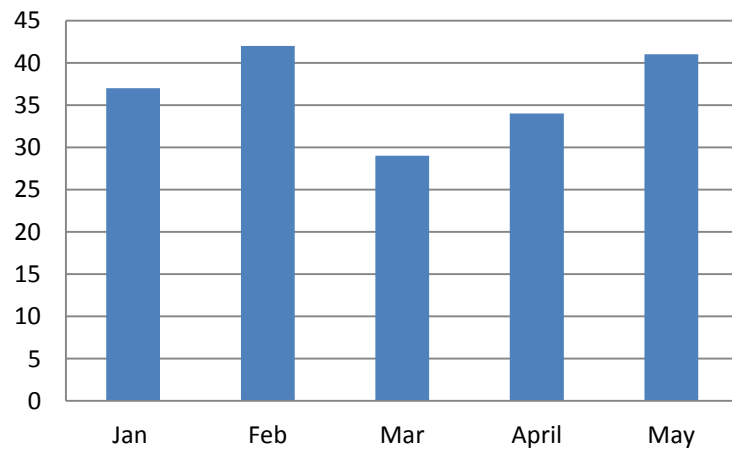


■ Site water management

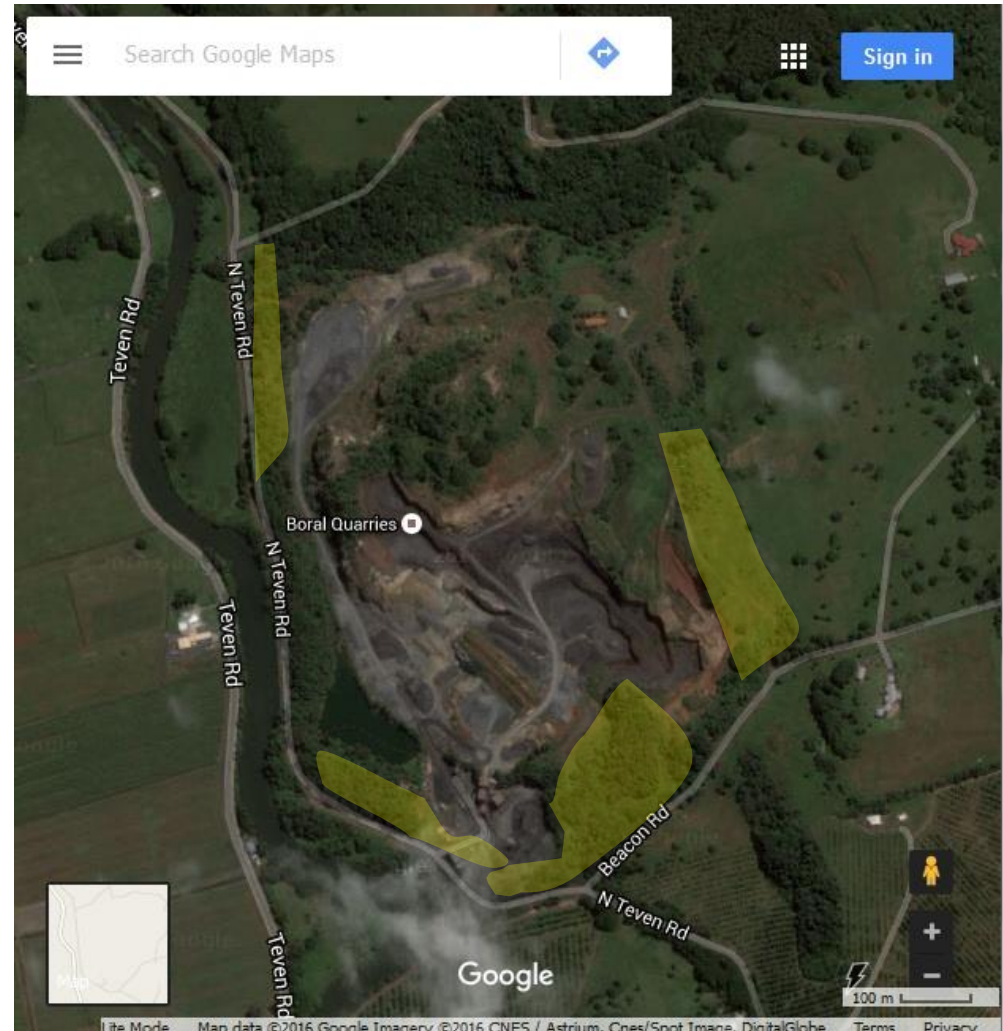
- Two extra sediment basins
- Electric pumps with float valves
- Clean water diversion at the NW end of the quarry
- Grated drain across the quarry entrance



Weed Control Man Hours



 Areas worked





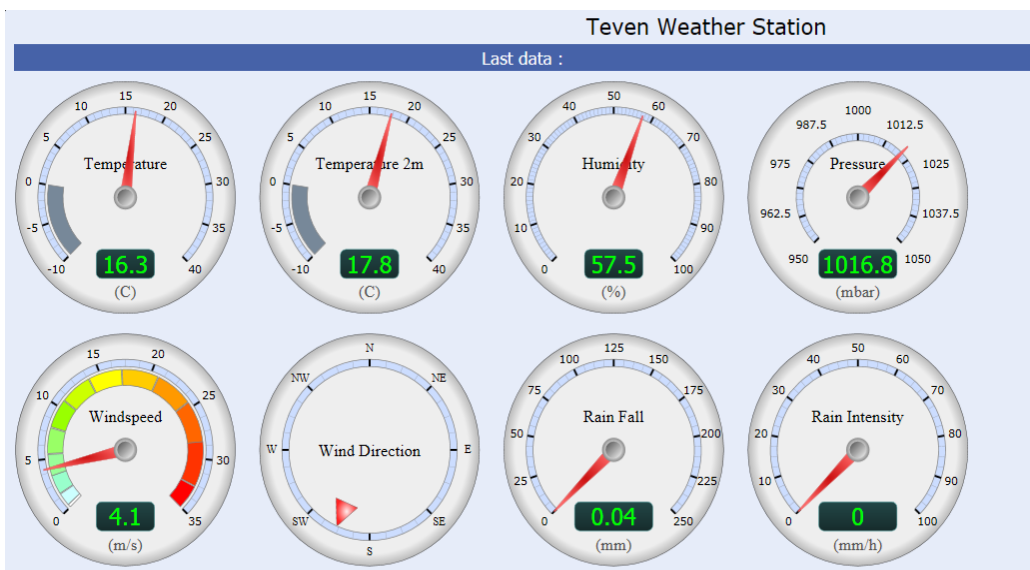
- **Noise bund**

- 3500 tonnes of material been placed at 4.6 metres high to create a noise bund on the eastern side of the workshop
- 560 native trees and shrubs planted with walls grass seeded



■ New site weather station

- Provides instantaneous weather data via internet for Boral (restricted access)
- Records past weather observations
- Data will be used to help interpret air quality monitoring results (Deposited Dust and PM10)
- The weather station is solar powered



**Native seedlings growing really
well on earth bund in basalt pit
1550 trees and grasses planted
in October 2014**



**The trees today, some standing
around 4 metres tall, providing
a great visual barrier**

Tree planting north (NE Corner)
1216 native seedlings planted - have
taken off well





Deposited Dust ^b	Averaging	
	Period	g/m ² /month ^a
	Annual	4.00

a – Maximum total deposited dust level

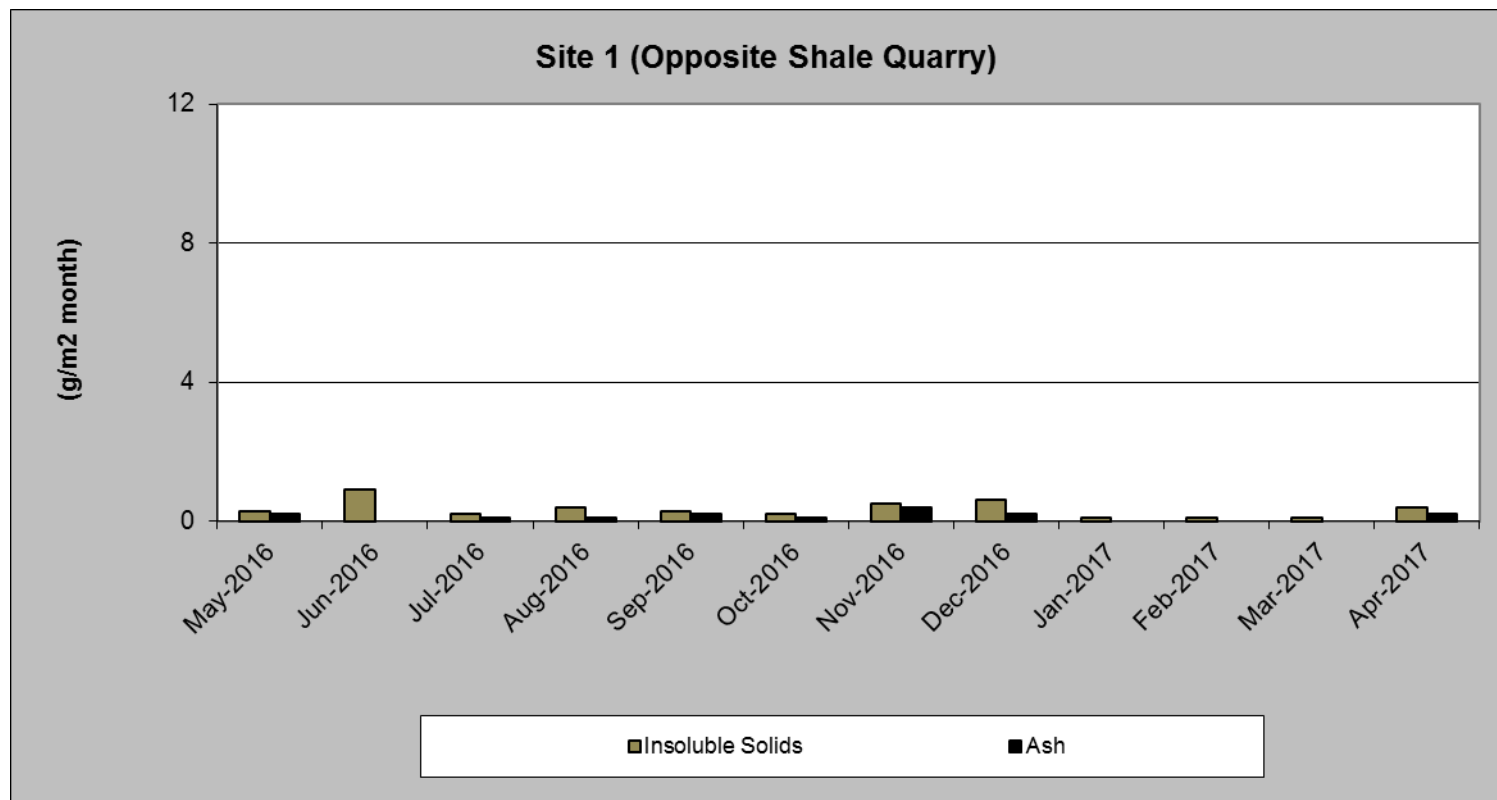
b – Dust is assessed as insoluble solids as defined by AS3580.10.1-1991 (AM-19) (At the nearest existing or likely future off-site sensitive receptor)

Source: Table 7.1 (Page 28) of the Approved Methods for the Modelling and Assessment of Air Pollutants in NSW – DEC 2005

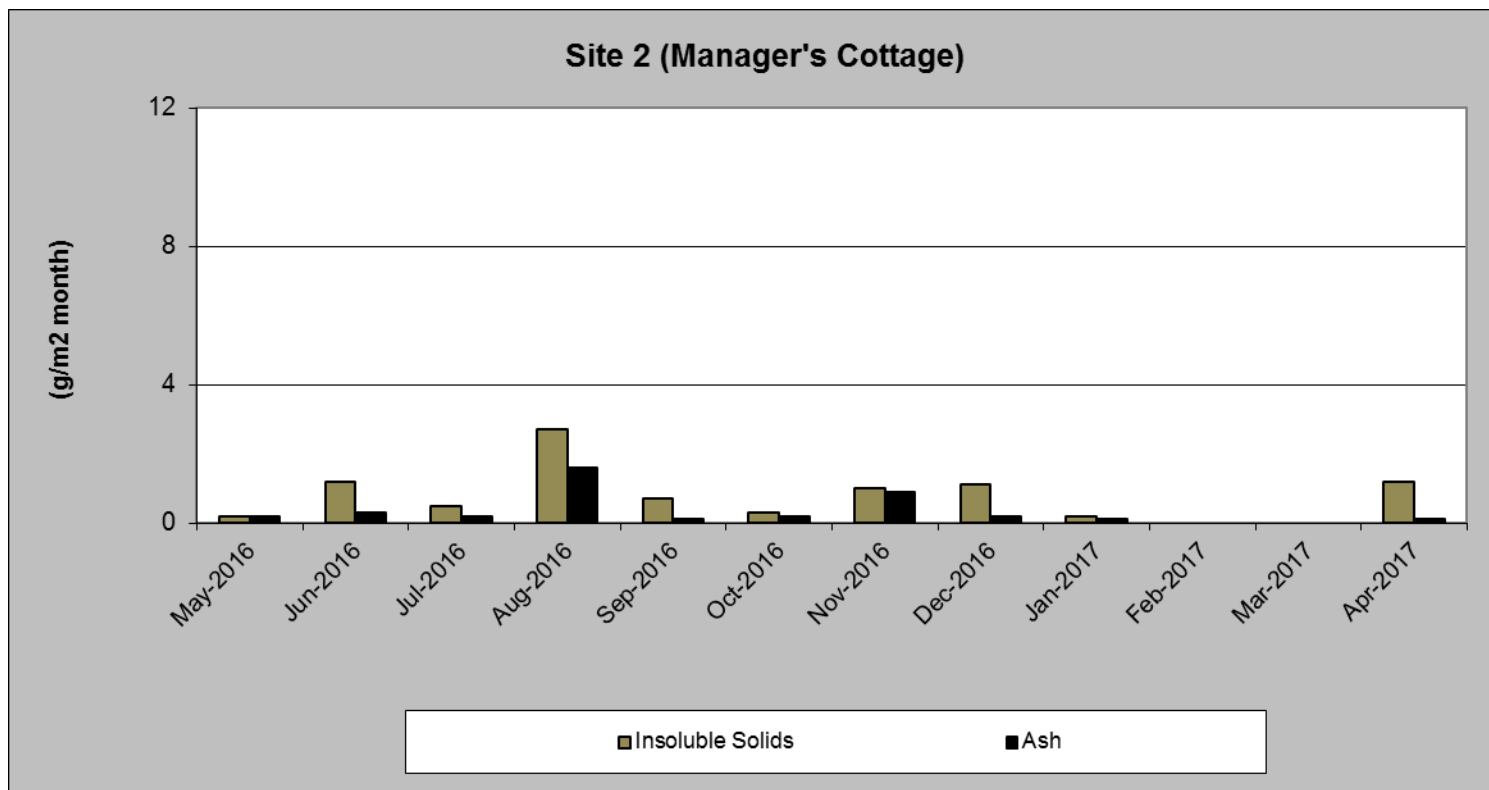
Average Dust Deposition (Insoluble Solids)

Site 1	0.34 g/m ²
Site 2	0.76 g/m ²
Site 3	1.78 g/m ²
Site 4	0.53 g/m ²

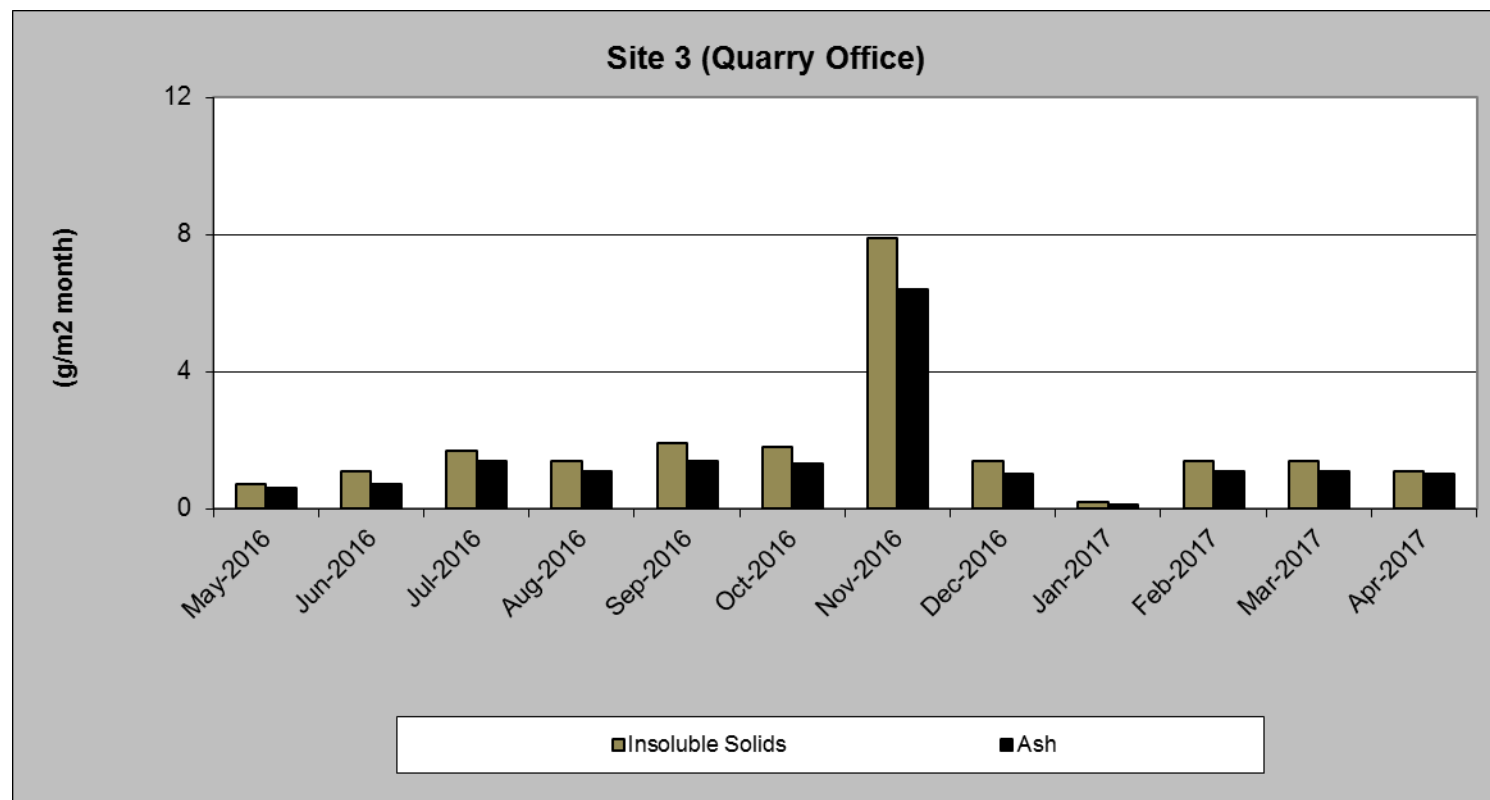
As of February 2015 the Environmental Analysis Laboratory (EAL) at Southern Cross University has been collecting and analysing the Deposited Dust sample bottles at the Boral Teven Quarry



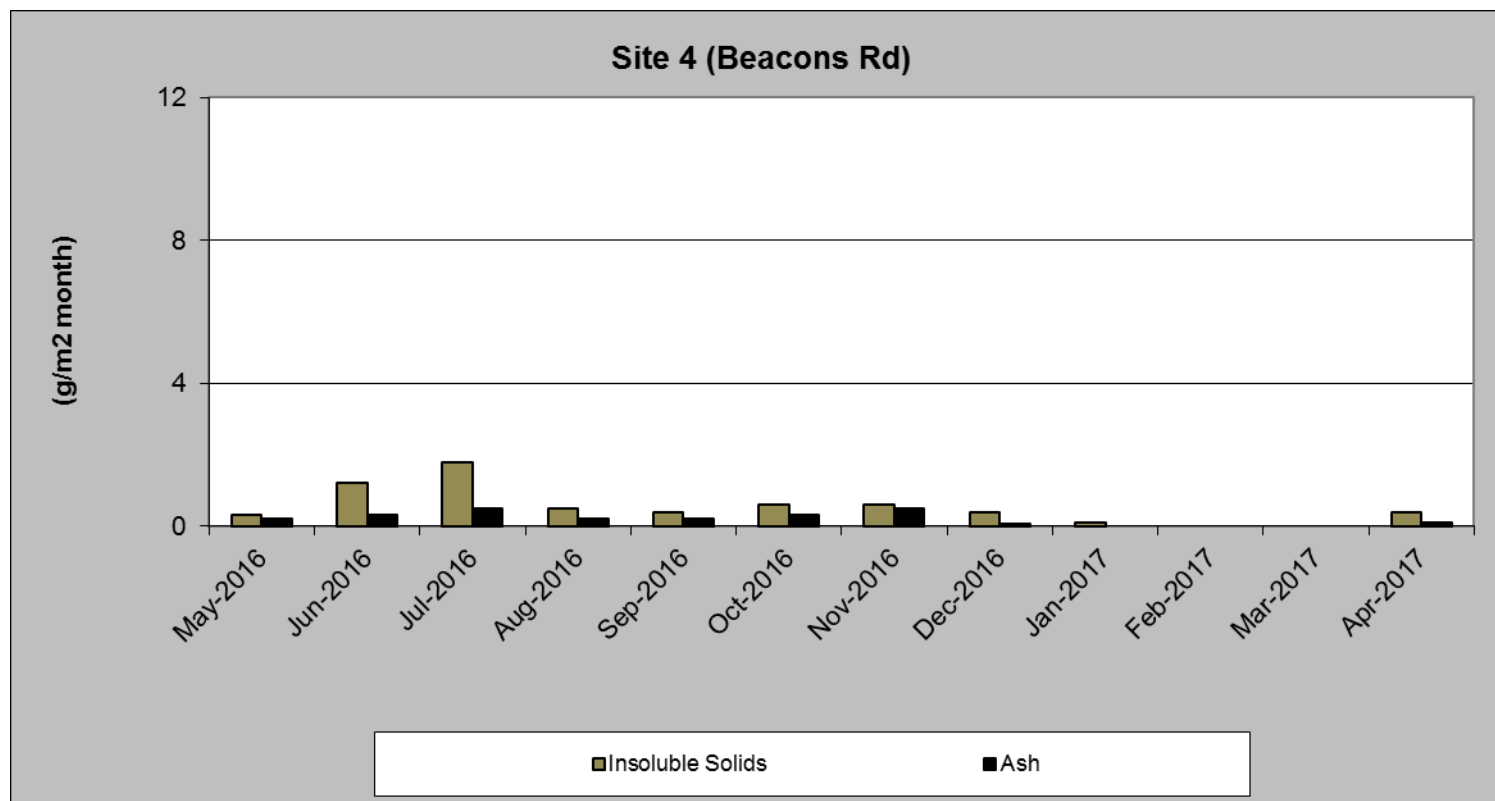
Annual Average Dust Deposition (Insoluble Solids) 0.34 g / m² / month



Annual Average Dust Deposition (Insoluble Solids) 0.76 g / m² / month

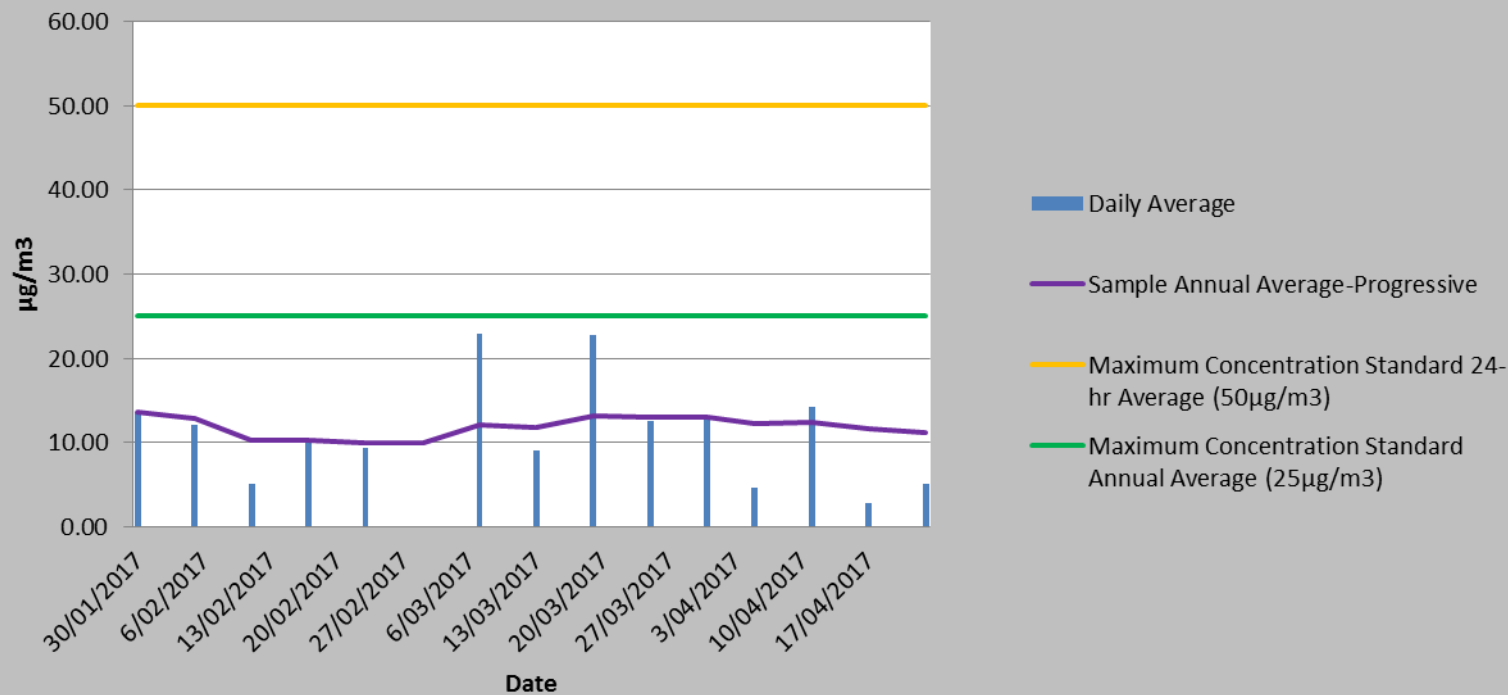


Annual Average Dust Deposition (Insoluble Solids) 1.78 g / m² / month



Annual Average Dust Deposition (Insoluble Solids) 0.53 g / m² / month

PM10 Monitoring: Teven Quarry



[illegible]

Date	Time	Overpressure [dB]	Peak Vibration [mm/s]
Tuesday, 8 September 2015	11:48:58	109.9	2.0
Tuesday, 22 September 2015	13:20:50	114.4	1.5
Thursday, 1 October 2015	13:03:07	106.0	2.1
Friday, 16 October 2015	13:32:00	107.0	2.1
Friday, 23 October 2015	13:15:24	110.6	0.8
Thursday, 24 March 2016	11:05:00	104.9	1.1
Tuesday, 3 May 2016	15:03:00	107.5	2.5
Wednesday, 29 June 2016	12:20:00	102.8	0.7
Friday, 9 September 2016	12:03:00	108.8	2.4
Friday, 7 October 2016	12:25:00	<110	<0.51
Monday, 30 January 2017	15:14:00	114.4	0.2
Monday, 13 March 2017	14:45:00	112.8	2.8
Monday, 10 April 2017	12:52:00	101.9	2.8

Boral Teven Quarry Blast Limits;

- Only 1 blast per day
- Only blast between 9am to 4pm Monday to Friday
- Vibration limits
 - 5mm/s 95%
 - 10mm/s 100%
- Overpressure Limits
 - 115dB 95%
 - 120dB 100%



Build something great™

BORAL TEVEN QUARRY

> Planning consent
(from Nov 2016)



Consent modification approved

- > **Council approved the modification on 24 November 2016**
 - > The consent will lapse on **27 June 2026**
 - > New operating hours for processing:
 - > **Monday to Friday – 7am to 6pm**
 - > **Saturday - None**
 - > Mobile crushing under strict conditions (not yet undertaken)
- > **Additional commitments made by Boral**
 - > Improved surface water management (dams and drains already built)
 - > Compliance noise monitoring (this month)
 - > Mobile plant noise mitigation strategy if exceedances detected
- > **Thanks for your feedback and input into the process. It was a genuinely collaborative effort and provided certainty for Boral, its local workforce, and the community.**



Build something great™



BORAL TEVEN QUARRY

- > Community activities and general business

Community activities 2015-17

- > The Teven Quarry has continued its efforts to be an active corporate citizen of Teven-Tintenbar and the greater Ballina community since the last WoC meeting.
- > Our major community partnership with the Tintenbar Community Aid Network (TinCAN) has been sustained throughout the period.
 - > 2016 Art Show - **\$4200** raised
 - > TinCAN 'bus trips' – latest to Brunswick River for a cruise and lunch during May.
- > **Other things we have supported or been involved with include:**
 - > Boral's corporate environmental partners, Conservation Volunteers Australia, have spent three days working at the Southern Cross School, Ballina (Sep 2015, Mar 2016)
 - > Ballina Lions Club's *World Festival of Magic* Children's Christmas Party (2015, 2016)
 - > Ballina Marine Rescue tower construction (along with Boral Alstonville Asphalt) (2016)
 - > Helping around the neighbourhood after large weather 'events' (Apr 2016)
 - > Small materials donations to local schools



General business and contacts

- > Items of general business
- > Next meeting of the Community Consultative Committee
 - > Likely to be around Oct 2017
 - > Next WoC meeting will be arranged for the first half of 2019
- > Boral Teven Quarry contacts:
 - > **Scott Gillieatt** Quarry Manager
6687 8360 / scott.gillieatt@boral.com.au
 - > **Ronnie Lawton** HSE Advisor (Northern NSW)
0401 892 133 / ronnie.lawton@boral.com.au
 - > **Paul Jackson** Stakeholder Relations Manager
4677 2946 / 0401 894 097 /
paul.jackson2@boral.com.au
 - > www.boral.com.au/tevenquarry
 - > feedback@boral.com.au



Build something great™



BORAL TEVEN QUARRY

> Thank you for your attendance